

43°30'
101°00' R31W

R30W

R29W

R28W

R27W

R26W

R25W

R79W

R78W

43°30'
100°00'

T40N

T39N

T38N

T37N

T36N

T35N

T100N

T99N

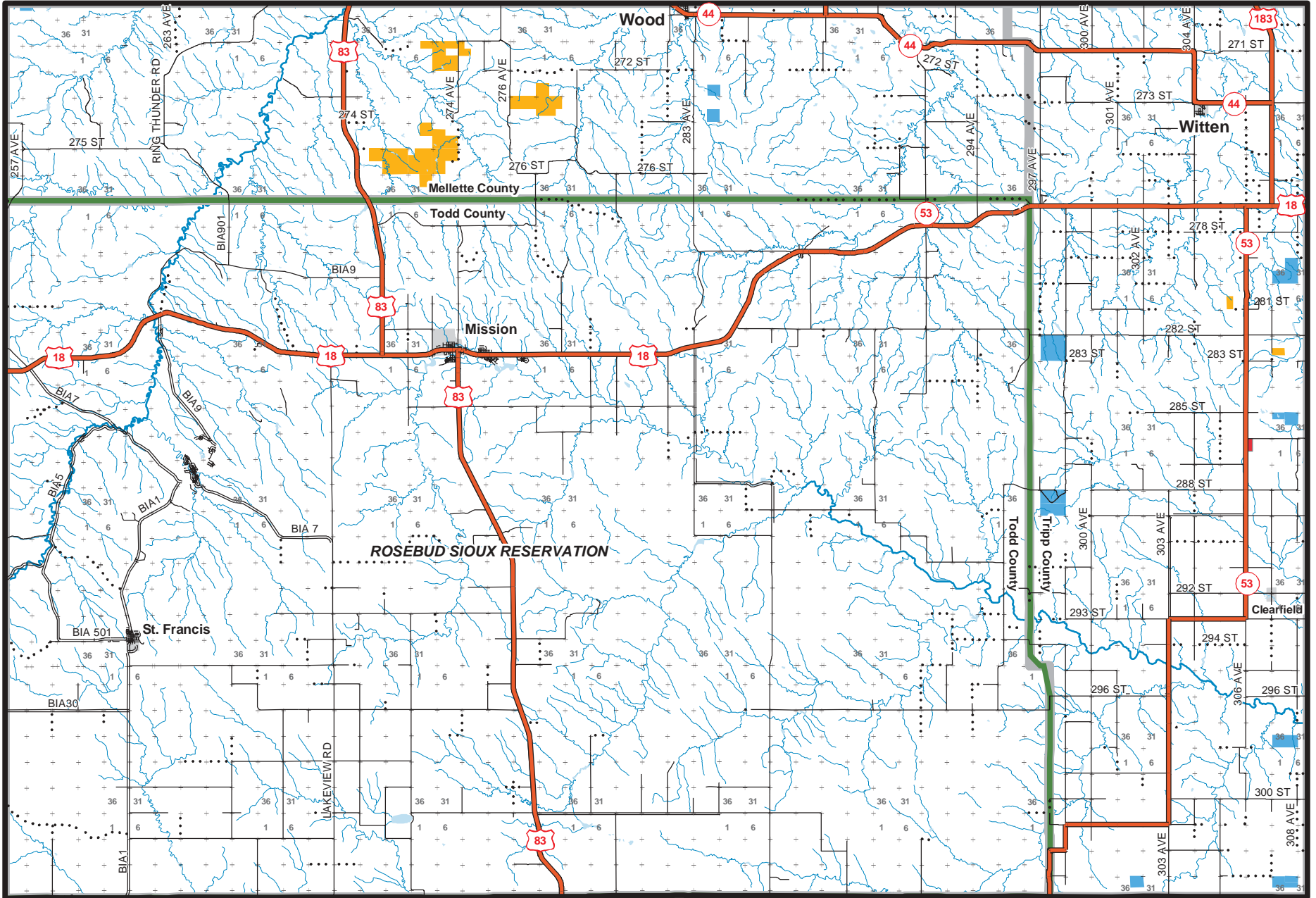
T98N

T97N

T96N

T95N

^ Continued on Map Sheet #30 ^



43°00'
101°00'

R31W

R30W

R29W

R28W

R27W

R26W

R25W

R79W

R78W

43°00'
100°00'

Map Sheet 24

These maps include data from other sources. Most of the federal lands depicted in this guide are not posted with boundary signs or fences. Federal lands may have been sold or errors may exist. For these reasons map users should consult with the appropriate federal agency for current ownership information.

Scale 1:325,000
1 inch represents 5.13 miles

These maps are to be used only as a guide. Signs will mark the actual boundary of the Walk In Area, Game Production Areas and Waterfowl Production Areas. Some Walk In Areas may have some additional restrictions. See the index in the back of the guide for details.